

SUMICEFINE Antibacterial Additives

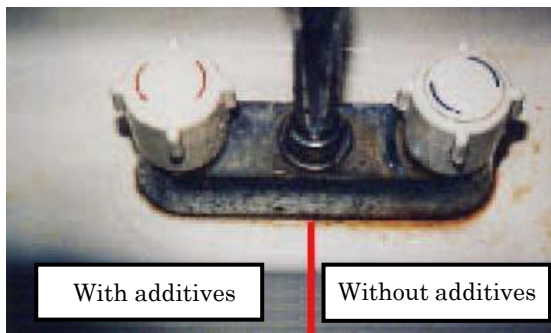
The antibacterial additives used for glazing provide an antibacterial function to pottery such as sanitary ware, tiles, tableware, and enamels.

Features

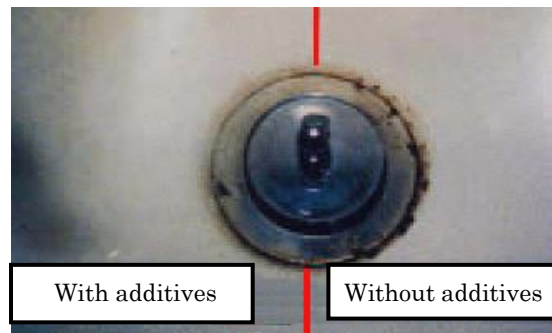
- The superb antibacterial effect can be seen using silver ions.
- The additives inhibit bacteria growths on the glazed surface.
- The steady effect of antibacterial can be observed even if the glaze is baked at high temperature.
- The antibacterial effect last semipermanently if used under normal conditions.

Effects

Wash basin



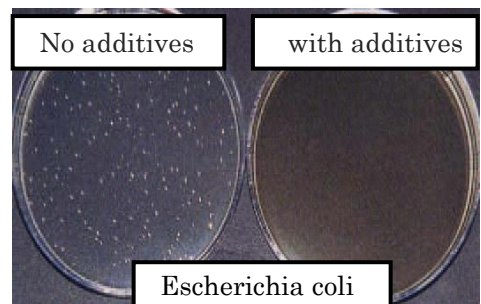
Water faucet area



Water drain area

The results of antibacterial effect for the glazing used the additives (Film Contact Method)

Samples	Additives	Inoculation number / cfu.	Viable number cfu.	Antibacterial activity value	Decreasing rate / %
No additives	—	3.0 × 10 ⁵	1.2 × 10 ⁴	—	—
AM15-SS-W	0.60%		<10	4.2	99.9



Escherichia coli